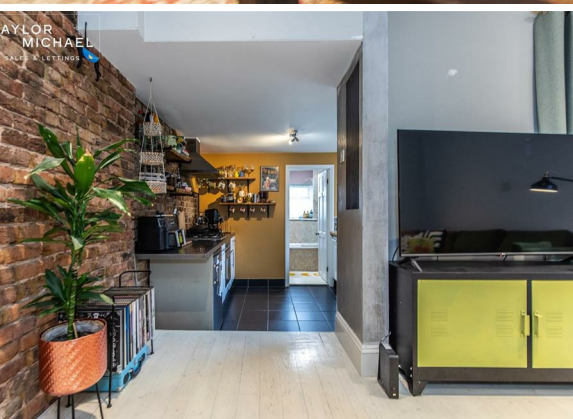




1 Bedroom Garden  
Flat  
located on  
Vere Road

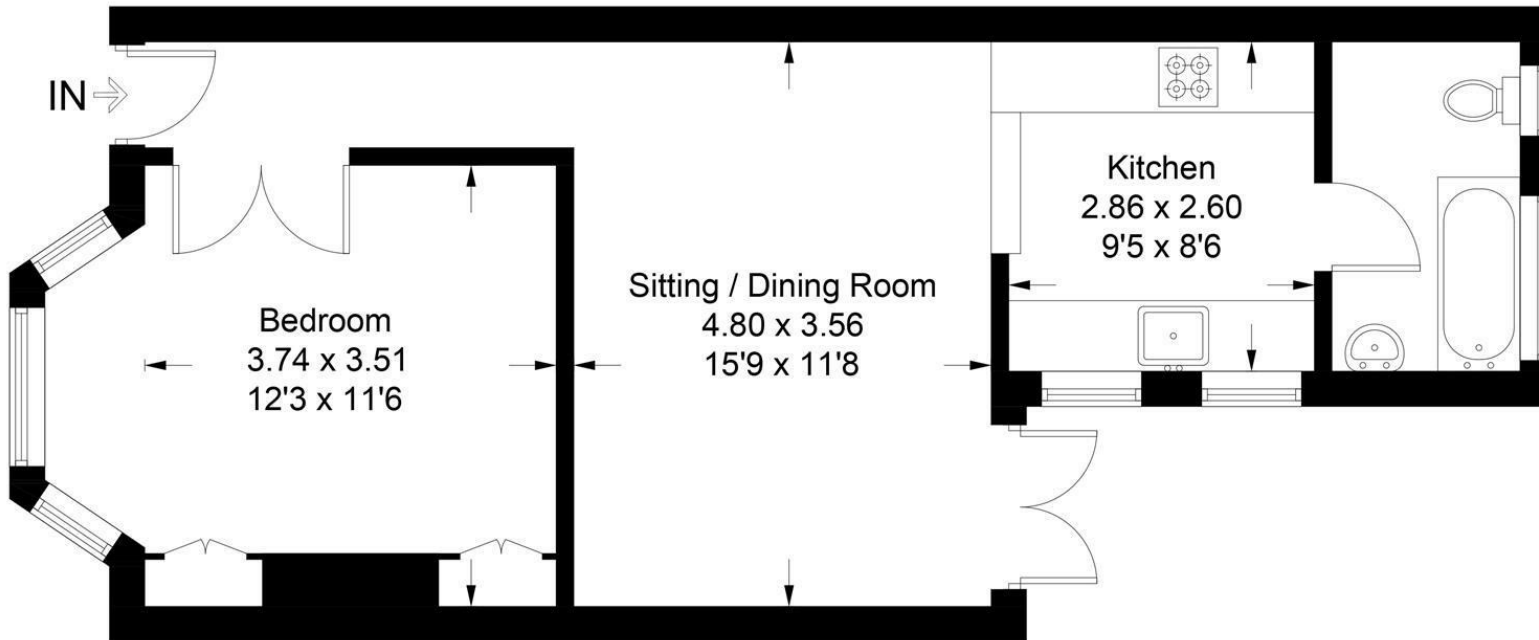
Offers in excess of  
£315,000



TAYLOR  
MICHAEL

## Vere Road, Brighton BN1 4NQ

Approximate Gross Internal Area = 49.3 sq m / 531 sq ft



### Lower Ground Floor

Illustration for identification purposes only, measurements are approximate, not to scale.  
Imageplansurveys @ 2025

Energy Efficiency Rating		
	Current	Potential
Very energy efficient - lower running costs		
(92 plus) A		
(81-91) B		
(69-80) C		
(55-68) D	66	78
(39-54) E		
(21-38) F		
(1-20) G		
Not energy efficient - higher running costs		
England & Wales		
EU Directive 2002/91/EC		

### DIRECTIONS

### CONTACT

62 Church Road  
Hove  
East Sussex  
BN3 2FP

E: [sales@taylormichael.agency](mailto:sales@taylormichael.agency)  
T: 01273 600100  
<https://taylormichael.agency/>

TAYLOR  
MICHAEL